



Overview

Welcome to Ricoh's Digital Image Productivity Software Suite. This suite is comprised of an exciting selection of software specifically suited to enhance the capabilities of your new RDC-4300 Megapixel Digital Camera.



ArcSoft's PhotoBase allows you to download images and sounds from your RDC-4300 and organize them in albums for easy retrieval.

Installation

1. Insert Disk 1 of the Digital Image Productivity Software Suite.
2. Click the Start menu and select Run. Click on Browse, then double-click on the PhotoBase folder.
3. Click on Setup.exe, then click open. Click on OK to begin installation.
4. Follow the prompts in the installer.

Downloading images from your RDC-4300

Connecting the camera to your computer

Use the supplied serial connection cable to connect your camera to an available Com port. Turn the camera's mode dial to the PC position. The LCD should read "Transmit".



Click on the Download Image tool:

Select the correct serial port and download speed for your system from the Options For RDC-4300 dialog then click on OK.

The Download Image dialog box will appear. A preview of the current image is displayed in the upper right of the dialog. To download this image click on the Current Frame check box just below the preview image. Use the arrow buttons (<< and >>) to see the other images currently stored in the camera. Use the Current Frame check box to select any other images to be downloaded. The Select All button can also be used to download all images currently stored in the camera. The location to download images can be changed by clicking on Browse. (Images are not deleted from the camera when downloaded.) When the desired images are selected, click on OK to proceed with downloading the images to PhotoBase.

Note: Images which have a sound annotation recorded by the RDC-4300 are noted in the album by a music note in the upper right hand corner of the thumbnail. To play the attached audio, simply select the thumbnail image containing the attached audio and right-click with your mouse. A menu will appear providing options for playback, detaching sounds and attaching sounds.

Uploading images from your RDC-4300

Connecting the camera to your computer

Use the supplied serial connection cable to connect your camera to an available Com port. Turn the camera's mode dial to the PC position. The LCD should read "Transmit"



Click on the Uploading Image tool:

The Upload Image dialog box will appear. A preview of the current image is displayed in the upper right of the dialog. To upload this image click on the Current Frame check box just below the preview image. Use the arrow buttons (<< and >>) to see the other images currently selected in PhotoBase. Use the Current Frame check box to select any other images to be uploaded. The Select All button can also be used to upload all images currently selected in PhotoBase. (Images are not deleted from the PhotoBase when uploaded.)

When the desired images are selected click on Upload To Camera to proceed with uploading the images to the camera. Select the correct Serial port and speed for your system from the Options For RDC-4300 dialog then click on OK.



ArcSoft's PhotoStudio allows you to easily edit and enhance your digital images and save them in a variety of formats.

Installation

PhotoStudio is automatically installed for you when you install PhotoBase. Please refer to the PhotoBase section for installation instructions.



Enroute Imaging's QuickStitch allows you to automatically stitch images together both horizontally and vertically to create wide angle panoramas.

Installation

1. Insert your Digital Image Productivity Software Suite CD-ROM, Disk 1 of 3, into your CD-ROM drive.
2. Click the Start menu and select Run. Click on Browse, then double-click on the QuickStitch folder.
3. Click on Setup.exe, then click open. Click on OK to begin installation.
4. Follow the prompts in the installer.



Enroute's QuickStitch 360 easily combines digital images captured with your Ricoh RDC-4300 Megapixel Digital Camera into high quality QuickTime VR panoramas.

Note

Enroute's QuickStitch 360 was in final product testing as of the printing of this guide. Please complete and return the coupon enclosed with your RDC-4300 to obtain this software. A complete instruction manual for Enroute's QuickStitch 360 will be shipped with each copy of the software.



MetaCrewation's LogoMotion allows you to easily create animated 3D logos and text for multimedia, business presentations and the World Wide Web.

Installation

1. Insert your Digital Image Productivity Software Suite CD-ROM, Disk 2 of 3, into your CD-ROM drive.
2. Using the Explorer, locate the LogoMotion Program Files folder on the CD.
3. Find the Setup.exe file and double-click it.
4. Follow the on-screen instructions to complete the installation.



Kai's Power Show allows you to quickly create spectacular slide shows with your images and sounds for business or just for fun.

Installation

1. Insert your Digital Image Productivity Software Suite CD-ROM, Disk 3 of 3, into your CD-ROM drive.
2. The installer and all related files reside in the root directory of the CD containing Show.
3. If using Windows NT 4, select File menu>Run.
If using Windows 95, select Start menu>Run.
4. Type the letter corresponding to your CD-ROM drive, followed by ":\setup" (e.g. type "d:\setup" if using the D drive) and click the OK button.
5. Follow the prompts.



Overview

Welcome to Ricoh's Digital Image Productivity Software Suite. This suite is comprised of an exciting selection of software specifically suited to enhance the capabilities of your new RDC-4300 Megapixel Digital Camera.

DU-4 DU-4 is a utility program for downloading and uploading your digital images and sounds to and from your RDC-4300.

Installation

1. Insert the DU-4 CD into your CD-ROM drive.
2. Drag the DU-4 icon onto your desktop
3. Double-click on the DU-4 icon to launch DU-4

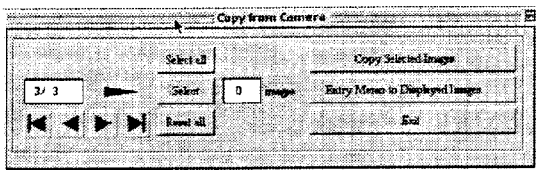
Downloading images from your RDC-4300

Connecting the camera to your computer

Use the supplied serial connection cable and Mac adapter to connect your camera to an available Com port. Turn the camera's mode dial to the PC position. The LCD should read "Transmit". From the DU-4 main screen, set the communication speed and port for your system.



Click on the Copy From Camera tool:



The Copy From Camera dialog box will appear. The image displayed on your camera's LCD is the current image to be downloaded. To download this image click on the Select check box. Use the arrow buttons (<< and >>) to see the other images currently stored in the camera. Use the Select check box to select any other images to be downloaded. The Select All button can also be used to download all images currently stored in the camera. (Images are not deleted from the camera when downloaded.) When the desired images are selected click on "Copy Selected Images" to proceed with downloading the images. You may then select a destination folder for the images.

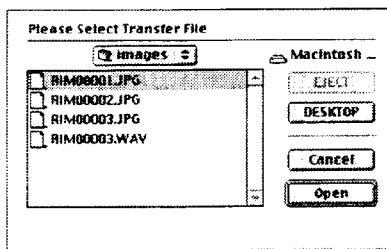
Uploading images from your RDC-4300

Connecting the camera to your computer

Use the supplied serial connection cable and Mac adapter to connect your camera to an available Com port. Turn the camera's mode dial to the PC position. The LCD should read "Transmit". From the DU-4 main screen, set the communication speed and port for your system.



Click on the Copy To Camera tool:



The Copy To Camera dialog box will appear. You may now navigate to any folder that contains a compatible file for uploading. Select an image and click on the Open button. The selected image will be copied to your camera.



ArcSoft's PhotoStudio allows you to easily edit and enhance your digital images and save them in a variety of formats.

Installation

1. Insert your Digital Image Productivity Software Suite CD-ROM, Disk 1 of 3, into your CD-ROM drive.
2. Double-click on the folder containing PhotoStudio Installer. Double-click on the PhotoStudio Installer icon.
3. Follow the on-screen instructions.



Enroute Imaging's QuickStitch allows you to automatically stitch images together both horizontally and vertically to create wide angle panoramas.

Installation

1. Insert your Digital Image Productivity Software Suite CD-ROM, Disk 1 of 3, into your CD-ROM drive.
2. Double-click on the folder containing QuickStitch. Double-click on the QuickStitch icon.
3. Follow the on-screen instructions.



Enroute's QuickStitch 360 easily combines digital images captured with your Ricoh RDC-4300 Megapixel Digital Camera into high quality QuickTime VR panoramas.

Note

Enroute's QuickStitch 360 was in final product testing as of the printing of this guide. Please complete and return the coupon enclosed with your RDC-4300 to obtain this software. A complete instruction manual for Enroute's QuickStitch 360 will be shipped with each copy of the software.



MetaCreation's LogoMotion allows you to easily create animated 3D logos and text for multimedia, business presentations and the World Wide Web.

Installation

1. Turn off any virus protection and compression programs and close any other applications currently open.
2. Insert your Digital Image Productivity Software Suite CD-ROM, Disk 2 of 3, into your CD-ROM drive.
3. Double-click the Installer icon from the CD-ROM and follow the instructions on screen.



Kai's Power Show allows you to quickly create spectacular slide shows with your images and sounds for business or just for fun.

Installation

1. Insert your Digital Image Productivity Software Suite CD-ROM, Disk 3 of 3, into your CD-ROM drive.
2. Double-click the SHOW CD-ROM icon on the desktop.
3. Double-click on the SHOW Install icon to begin installation.
4. The installation dialog displays an important ReadMe. Click "Continue" after reading the complete ReadMe.
5. In the main install window, click "Install".