



**Overview**

The software suite that comes with your camera is specifically designed for your Ricoh RDC-4200 digital camera so you may get the most out of your images. Follow the steps below to get started quickly.

**DU-4**

DU-4 is a camera control utility for unloading and downloading images. DU-4 allows the camera's primary functions to be controlled directly from your computer. It enables the creation of photo albums or catalogs of images.

**Installation**

1. Insert the DU-4 CD into your CD-ROM drive.
2. Drag the DU-4 icon onto your desktop
3. Double-click on the DU-4 icon to launch DU-4

**Downloading images from your RDC-4200**

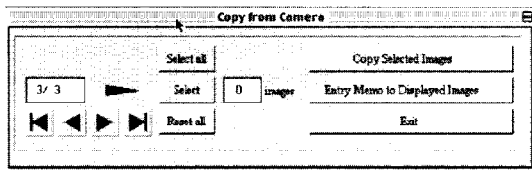
**Connecting the camera to your computer**

1. Turn the camera's power off.
2. Open the terminal cover and connect the small end of the supplied serial cable into the camera's serial port.
3. Turn off your computer's power.
4. Connect the other end of the cable to an available COM port on your PC.
5. Turn on the camera's power.
6. Turn on your computer.
7. Rotate the camera's mode dial to the PC position.
8. The camera's LCD will read "Transmit".  
(See the technical support section of your software operation and activity guide for trouble shooting tips.)

From the DU-4 main screen, set the communication speed and port for your system.



**Click on the Copy From Camera tool:**



The Copy From Camera dialog box will appear. The image displayed on your camera's LCD is the current image to be downloaded. To download this image click on the Select check box. Use the arrow buttons (<< and >>) to see the other images currently stored in the camera. Use the Select check box to select any other images to be downloaded. The Select All button can also be used to download all images currently stored in the camera. (Images are not deleted from the camera when downloaded.) When the desired images are selected click on "Copy Selected Images" to proceed with downloading the images. You may then select a destination folder for the images.

**Uploading images from your RDC-4200**

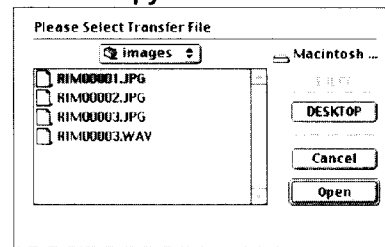
**Connecting the camera to your computer**

1. Turn the camera's power off.
2. Open the terminal cover and connect the small end of the supplied serial cable into the camera's serial port.
3. Turn off your computer's power.
4. Connect the other end of the cable to an available COM port on your PC.
5. Turn on the camera's power.
6. Turn on your computer.
7. Rotate the camera's mode dial to the PC position.
8. The camera's LCD will read "Transmit".  
(See the technical support section of your software operation and activity guide for trouble shooting tips.)

From the DU-4 main screen, set the communication speed and port for your system.



**Click on the Copy To Camera tool:**



The Copy To Camera dialog box will appear. You may now navigate to any folder that contains a compatible file for uploading. Select an image and click on the Open button. The selected image will be copied to your camera.



ArcSoft's PhotoStudio allows you to easily edit and enhance your digital images and save them in a variety of formats. Easy-to-use professional level editing tools and special effect features makes altering your images effortless.

**Installation**

1. Insert your Software Suite CD into your CD-ROM drive.
2. Double-click on the folder containing the PhotoStudio Installer. Double-click on the PhotoStudio Installer.
3. Follow the on-screen instructions.



## Overview

The software suite that comes with your camera is specifically designed for your Ricoh RDC-4200 digital camera so you may get the most out of your images. Follow the steps below to get started quickly.

## ArcSoft photo Base

ArcSoft's PhotoBase allows you to download images from your RDC-4200 and organize them in albums for easy retrieval. Within PhotoBase you may create slide shows of your images that you can save to disk as well as print out thumbnails of all the pictures within an album.

## Installation

1. Insert the Software Suite CD into your CD-ROM drive.
2. Click the Start menu and select Run. Click on Browse, then double-click on Setup.exe, then click open.
3. Click on OK to begin installation.
4. Follow the on screen prompts.
5. To run PhotoBase, click on Start, Programs, ArcSoft Camera Suite, PhotoBase.

## Downloading images from your RDC-4200

### Connecting the camera to your computer

1. Turn the camera's power off.
2. Open the terminal cover and connect the small end of the supplied serial cable into the camera's serial port.
3. Turn off your computer's power.
4. Connect the other end of the cable to an available COM port on your PC.
5. Turn on the camera's power.
6. Turn on your computer.
7. Rotate the camera's mode dial to the PC position.
8. The camera's LCD will read "Transmit".  
(See the technical support section of your software operation and activity guide for trouble shooting tips.)



### Click on the Download Image tool in PhotoBase.

Select the correct serial port and download speed for your system from the Options For RDC-4000 dialog box, then click on OK. The Download Image dialog box will appear. A preview of the current image is displayed in the upper right of the dialog box. To download this image click on the Current Frame check box just below the preview image. Use the arrow buttons (<< and >>) to see the other images currently stored in the camera. Use the Current Frame check box to select any other images to be downloaded. The Select All button can also be used to download all images currently stored in the camera. The location to download images can be changed by clicking on Browse. (Images are not deleted from the camera when downloaded.) When the desired images are selected, click on OK to proceed with downloading the images to PhotoBase.

## Uploading images from your RDC-4200

### Connecting the camera to your computer

1. Turn the camera's power off.
2. Open the terminal cover and connect the small end of the supplied serial cable into the camera's serial port.
3. Turn off your computer's power.
4. Connect the other end of the cable to an available COM port on your PC.
5. Turn on the camera's power.
6. Turn on your computer.
7. Rotate the camera's mode dial to the PC position.
8. The camera's LCD will read "Transmit".  
(See the technical support section of your software operation and activity guide for trouble shooting tips.)



### Click on the Upload Image tool in PhotoBase.

The Upload Image dialog box will appear. A preview of the current image is displayed in the upper right of the dialog box. To upload this image click on the Current Frame check box just below the preview image. Use the arrow buttons (<< and >>) to see the other images currently selected in PhotoBase. Use the Current Frame check box to select any other images to be uploaded. The Select All button can also be used to upload all images currently selected in PhotoBase. (Images are not deleted from the PhotoBase when uploaded.) When the desired images are selected click on Upload To Camera to proceed with uploading the images to the camera. Select the correct Serial port and speed for your system from the Options For RDC-4000 dialog then click on OK.



ArcSoft's PhotoStudio allows you to easily edit and enhance your digital images and save them in a variety of formats. Easy-to-use professional level editing tools and special effects features makes altering your images effortless.

## Installation

1. PhotoStudio is automatically installed when you install PhotoBase.
2. To run PhotoStudio, click on Start, Programs, ArcSoft Camera Suite, PhotoStudio.