



FlashPath™ SmartMedia™

Installation and User's Guide

for Macintosh PowerBooks® and Power PCs®

for installation from CD ROM



July 2000

SmartDisk Corporation
3506 Mercantile Avenue
Naples, Florida 34104

www.smartdisk.com

No part of this document may be reproduced in any form or by any means, electronic or mechanical, for any purpose, without the express written permission of SmartDisk Corporation.

© 2000 SmartDisk Corporation.

The software and documentation comprising FlashPath is a proprietary product of SmartDisk Corporation and are protected by copyright laws and international treaty. FlashPath is supplied with a non-transferable license for use of one copy of the software by the licensed user. The software must not be copied or transferred to any other media except to the hard disk of a personal computer for the purposes of running the software within the constraints of the license.

FlashPath is a trademark of SmartDisk Corporation of the U.S.A.

SmartMedia is a trademark of Toshiba Corporation.

PowerBook and Power PC are registered trademarks of Apple Corporation.

All other brand and product names are registered trademarks of their respective owners.

SmartDisk Corporation
3506 Mercantile Ave.
Naples, FL 34104

Main:		(941) 436-2500
	Fax:	(941) 436-2512
	Web Address:	www.smartdisk.com
Support:	Toll free:	1-800-968-9822
	E-Mail:	fpsupport@techsupereply.com

Document Number: 117-2001-010

Date: July 2000

90 DAY LIMITED WARRANTY

SmartDisk Corporation (the Company) warrants to the original retail purchaser of this Product that should this Product or any part thereof (except the user changeable batteries) under normal use and conditions, be proven defective in material or workmanship within ninety (90) days from the date of purchase, such defects will be repaired or replaced (with new or rebuilt parts), at the Company's option, without charge for parts or labor directly related to the defect(s).

To obtain repairs or replacement within the terms of this Warranty, the Product should be delivered with proof of purchase and specification of defect(s), transportation prepaid, to the company from which you purchased this Product.

This Warranty does not apply to batteries, or costs incurred for their removal, reinstallation, testing, or evaluation, nor to any Product or part thereof if its correction, repair or replacement is required because of: (i) natural disasters, including fire, smoke, water, wind, earthquakes or lightning, (ii) electric power failures, (iii) the failure to maintain appropriate environmental conditions, (iv) the neglect, misuse or other than the ordinary use of the Product, or (v) attempted repairs or alterations by persons other than those employed by the Company. This Warranty is not assignable or transferable.

THE EXTENT OF THE COMPANY'S LIABILITY UNDER THIS WARRANTY IS LIMITED TO THE REPAIR OR REPLACEMENT PROVIDED ABOVE. IN THE EVENT REPAIR OR REPLACEMENT OF THE PRODUCT IS NOT FEASIBLE, THE COMPANY MAY, IN ITS SOLE DISCRETION, ELECT TO REFUND, TO THE ORIGINAL PURCHASER, THE PURCHASE PRICE PAID FOR THE PRODUCT. IN NO EVENT SHALL THE COMPANY'S LIABILITY EXCEED THE PURCHASE PRICE PAID BY PURCHASER FOR THE PRODUCT. IN NO CASE SHALL THE COMPANY BE LIABLE FOR ANY DAMAGES, EVEN IF SUCH DAMAGES ARE FORESEEABLE, RESULTING FROM THE USE OF, OR INABILITY TO USE, THIS PRODUCT, INCLUDING, WITHOUT LIMITATION, DAMAGE TO OR LOSS OF DATA.

THE EXPRESSED WARRANTY SET FORTH HEREIN IS EXCLUSIVE, AND THE COMPANY DISCLAIMS ANY IMPLIED WARRANTIES, INCLUDING ANY IMPLIED WARRANTY OF MERCHANTABILITY, FITNESS FOR A PARTICULAR PURPOSE, AND NON-INFRINGEMENT. ANY ACTION FOR BREACH OF ANY WARRANTY HEREUNDER INCLUDING IMPLIED WARRANTIES MUST BE BROUGHT WITHIN A PERIOD OF 12 MONTHS FROM DATE OF ORIGINAL PURCHASE. IN NO CASE SHALL THE COMPANY BE LIABLE FOR ANY CONSEQUENTIAL OR INCIDENTAL DAMAGES FOR BREACH OF THIS OR ANY OTHER WARRANTY, EXPRESSED OR IMPLIED, WHATSOEVER. No person or representative is authorized to assume for the Company any liability other than expressed herein in connection with the sale of this Product.

Some states or territories do not allow limitations on how long an implied warranty lasts or the exclusion may not apply to you. This Warranty gives you specific rights, and you may also have other rights which vary from territory to territory.

FlashPath is a trademark of SmartDisk Corporation of the U.S.A. PC/AT is a registered trademark of International Business Machines Corp. of the U.S.A. Microsoft and Windows are trademarks of Microsoft Corporation and registered in the United States and other countries. All other brand and/or product names are the property of their respective holders.

© 2000 SMARTDISK CORPORATION. ALL COMPANY AND PRODUCT NAMES ARE THE PROPERTY OF THEIR RESPECTIVE HOLDERS. U.S. PATENT 5,584,043 AND OTHERS.

FLASHPATH IS MANUFACTURED BY AND A TRADEMARK OF SMARTDISK CORPORATION.

117-0004-010

DISCLAIMER

This software is provided by SmartDisk "AS IS." SmartDisk makes no representations or warranties of any kind, express or implied, as to the operation of this software. To the full extent permissible by applicable law, SmartDisk disclaims all warranties, express or implied, including, but not limited to, implied warranties of merchantability and fitness for a particular purpose, and any warranties of non-infringement. SmartDisk will not be liable to any party for direct, indirect, special or other consequential or incidental damages arising directly or indirectly from the use of this software, including, but not limited to, any lost profits, business interruption, loss of program or other data on your information handling system or otherwise, even if SmartDisk is expressly advised of the possibility of such damages.

117-0001-010

FlashPath SmartMedia for Macintosh Quick Start

Note: FlashPath SmartMedia for the Macintosh is a read-only application. You cannot use FlashPath SmartMedia to write, modify, or delete files on the SmartMedia.

System Requirements:

- RAM: 5 MB
- Hard Disk: 1 MB of free space

1. Load Software

Insert the FlashPath SmartMedia Installation CD into the CD ROM drive.

Copy the *ReadFlashPath* file from the FlashPath SmartMedia Installation CD to a convenient location on your hard drive.

2. Insert the SmartMedia into Your FlashPath

Remove the SmartMedia from your digital appliance and insert it into your FlashPath. Note the orientation.

IMPORTANT: Before launching FlashPath, you must (depending on your Mac Operating System) turn off:

Apple Menu → *Control Panels* → *PC Exchange* (turn off *PC Exchange*)

or

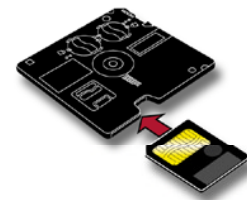
Apple Menu → *Control Panels* → *Extension Manager* (turn off *File Exchange* and reboot to unload the *File Exchange* extension from the system)

3. Insert FlashPath into Your Floppy Drive and Transfer Files

You can now use your SmartMedia like a floppy disk to copy files to your hard drive by following the steps below.

Note: Always use the right bay of a PowerBook for the floppy drive.

1. Launch the utility program by going to the location where you saved *ReadFlashPath*. Double click on *ReadFlashPath*.
2. Follow the on-screen instructions until FlashPath SmartMedia Utility window opens.
3. Copy the folders or individual images (or files) you want to your hard drive. Use the *Folder:* pull down menu to navigate between folders and sub-folders.



If your camera supports thumbnails, they can be displayed for each image.

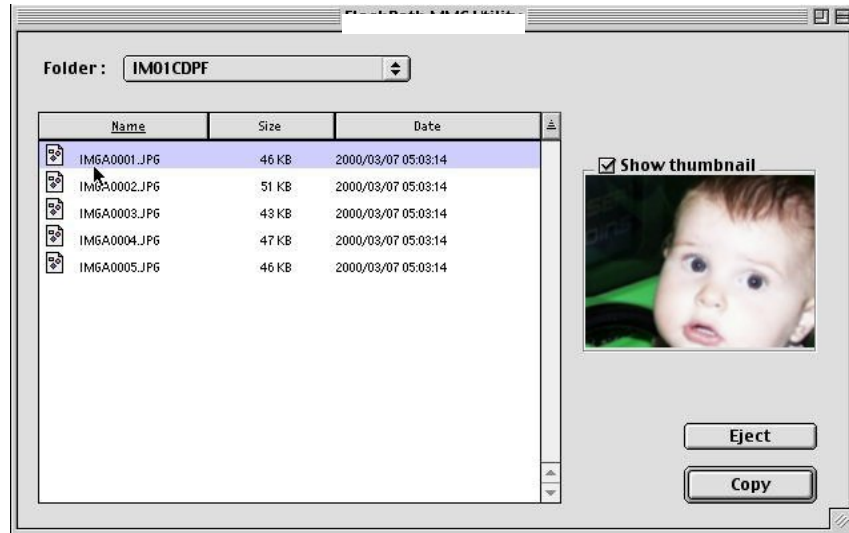


Table of Contents

CHAPTER 1 WELCOME TO FLASHPATH SMARTMEDIA	8
SYSTEM REQUIREMENTS.....	8
SUPPORTED PLATFORMS.....	9
NON-SUPPORTED PLATFORMS.....	9
OPERATING AND STORAGE CONDITIONS	9
INSTALLING BATTERIES.....	9
<i>To change batteries</i>	9
INSERTING SMARTMEDIA INTO THE FLASHPATH.....	10
CLEANING.....	11
CHAPTER 2 INSTALLING FLASHPATH SMARTMEDIA FOR MACINTOSH SOFTWARE.....	12
CHAPTER 3 USING THE FLASHPATH SMARTMEDIA FOR MACINTOSH	13
TO ERASE OLD PICTURES FROM A SMARTMEDIA	14
TO UNINSTALL FLASHPATH SOFTWARE	14
CHAPTER 5 TROUBLESHOOTING.....	15
SAFETY	16
DEFINITION OF TERMS	16
<i>WARNINGS</i>	16
<i>CAUTIONS</i>	17

Chapter 1 Welcome to FlashPath SmartMedia

Shaped like a 3.5-inch floppy disk, the FlashPath SmartMedia can read data from a SmartMedia using your computer's internal floppy disk drive.

NOTE: FlashPath SmartMedia for the Macintosh PowerBook and PowerPC is a **read-only application**. You cannot use FlashPath SmartMedia to write, modify, or delete files on the SmartMedia.

FlashPath SmartMedia for Macintosh supports PowerBook and Power PC computers with 3.5-inch, 1.44 MB floppy drives.

Note: Avoid operating and storing the product in an environment subject to excessive temperature fluctuations which may result in condensation forming on the FlashPath.

Note: Do not store the SmartMedia in the FlashPath. To protect the FlashPath and floppy disk drive, remove the FlashPath from your floppy disk drive and place it in its jewel case as soon as you have finished using it.

System Requirements

To use FlashPath, you need the following hardware and software:

- RAM: 5 MB or more
- Hard Disk with 1 MB or more free space
- Apple 3.5-inch internal floppy disk drive
- FlashPath SmartMedia Installation CD
- SmartMedia - 4MB to 64MB

Note: FlashPath SmartMedia does not support Macintosh systems with dual processors.

Supported Platforms

Successful operations have been completed on the following Mac systems:

- Apple Power Macintosh 6100/60 (601/60) running Mac OS 7.5.1
- Apple PowerPC 7200/90 (601/90) running Mac OS 8.1b
- Apple Power Macintosh 8100/80 (601/80) running Mac OS 7.5.3
- Apple Macintosh PowerPC G3 running Mac OS 8.1
- Apple Macintosh PowerBook G3 running Mac OS 8.1

Non-Supported Platforms

This FlashPath version does NOT support the following versions of the Macintosh:

- Apple PowerMac 8500/180 - B1-7.5.3 revision 2.2 System Software
- Apple Macintosh Centris 650 (68040/16 MHz) running Mac OS 7.6.1
- Apple Quadra 610 (68040/20 MHz) running Mac OS 7.5.3

Operating and Storage Conditions

Storage

Temperature	0 to + 65°C
Temperature Change	less than 20°/hr.
Humidity	20-80% (non-condensing)

Operating

Temperature	0 to + 55°C
Temperature Change	less than 20°/hr.
Humidity	20-80% (non-condensing)

Installing Batteries

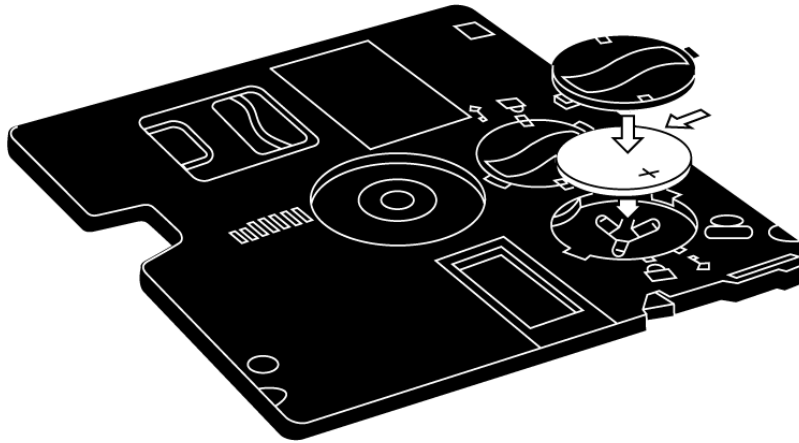
Your FlashPath comes with batteries already installed. When batteries expire, replace both batteries with new CR2016 lithium button cell batteries. **Batteries cannot be re-charged.**

To change batteries

Place your FlashPath on a flat surface and gently press down on the battery cover.

- a. Turn each cover counter-clockwise until battery compartment is open.
- b. Install new lithium button cells. Make sure that the positive side (marked with a + sign) is up and that the side spring contact is located on the side of the battery. The contact must not be trapped beneath the battery.

Caution: Never insert Flashpath into a floppy drive without batteries in place and covers properly closed.



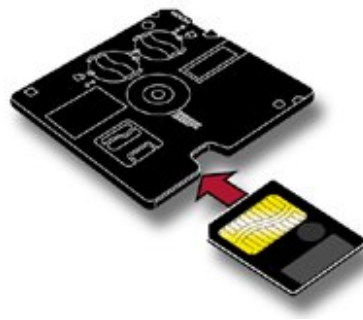
Changing Batteries

Note: Always replace both batteries at the same time. Use lithium button battery CR2016.

Inserting SmartMedia into the FlashPath

Insert the SmartMedia into the FlashPath with the electronic contacts facing away from the metallic top cover of the FlashPath. Insert the SmartMedia only until the SmartMedia seats in the FlashPath.

Caution: Do not use excessive pressure. If you fail to completely insert the SmartMedia, remove the SmartMedia, check that contacts and case are clean, and try again.

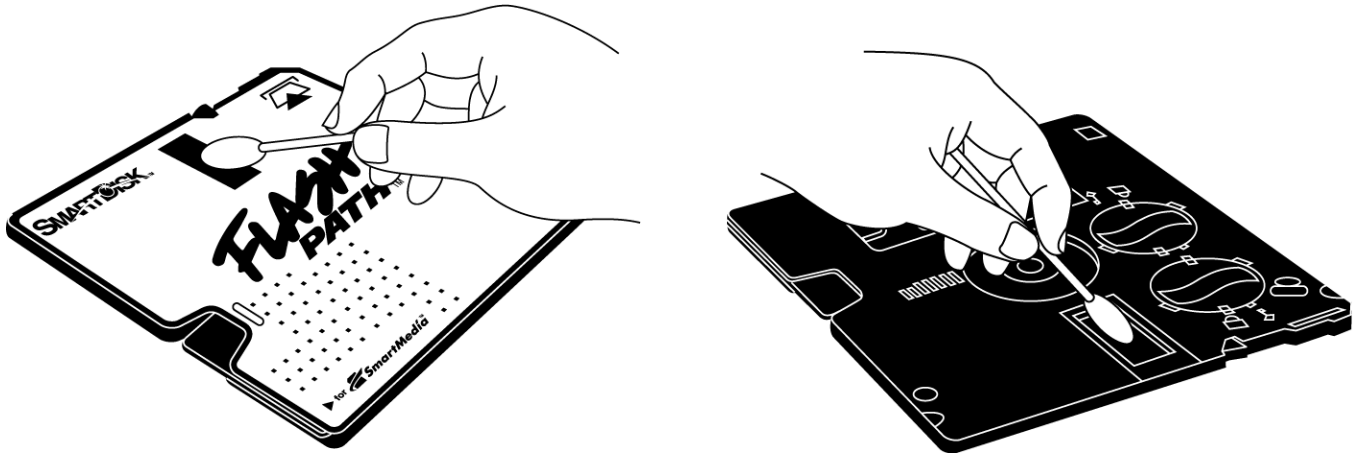


Note: FlashPath will not operate if the SmartMedia is not inserted completely.

Cleaning

Remove the FlashPath from the floppy disk drive; remove the SmartMedia from the FlashPath. Use a clean, dry, lint free cloth or cotton swab to wipe off any oil, dust, or particles in the slot on the front and the back of the FlashPath.

If necessary, clean the remainder of the outside of the FlashPath with a clean, lint free cloth or paper towel and denatured alcohol.



Cleaning the FlashPath

After cleaning, place FlashPath in its jewel case for storage.

Chapter 2 Installing FlashPath SmartMedia for Macintosh Software

Insert the FlashPath SmartMedia Installation CD into the CD ROM drive.

Copy the *ReadFlashPath* file from the FlashPath SmartMedia Installation CD to a convenient location on your hard drive.

Chapter 3 Using the FlashPath SmartMedia for Macintosh

1. Insert the SmartMedia into the FlashPath with the electronic contacts facing away from the metallic top cover of the FlashPath.
2. Insert the FlashPath into the floppy drive.

IMPORTANT: Before launching FlashPath, you must (depending on your Mac Operating System) turn off:

Apple Menu → Control Panels → PC Exchange (turn off PC Exchange)

OR

Apple Menu → Control Panels → Extension Manager (turn off File Exchange and reboot to unload the File Exchange extension from the system)

3. Launch the utility program by going to the location where you saved ReadFlashPath. Double click on ReadFlashPath.
4. Follow the on-screen instructions until the FlashPath SmartMedia Utility window opens.
5. Copy the folders or individual files you want to your hard drive. Use the *Folder:* pull down menu to navigate between folders and sub-folders.



If you are reading camera images and your camera supports thumbnails, they can be displayed for each image.



To Erase Old Pictures from a SmartMedia

1. First copy any data file you want to keep to your hard drive or other media.
2. Then use your digital appliance to delete files or reformat your SmartMedia.

To Uninstall FlashPath Software

To uninstall FlashPath software, delete the ReadFlashPath utility by dragging it to the Trash.

Chapter 5 Troubleshooting

1. FlashPath is in the shutdown mode. What should I do?

Eject the FlashPath from the floppy drive, wait awhile, and then reinsert it.

2. The computer does not recognize the FlashPath. Why?

If you attempt to access the FlashPath while inserting it into the floppy disk drive, the FlashPath may not be recognized.

In most cases, the computer will recognize the FlashPath if you eject the FlashPath from the floppy drive, wait awhile, and then reinsert it.

The computer may not recognize the FlashPath under the following conditions:

- **FlashPath automatically powers off after 5 minutes of inactivity, to extend battery life.** If this occurs, eject the FlashPath from the floppy drive, wait awhile, and then reinsert it.
- **When the batteries are not loaded or are almost completely exhausted.** Replace the batteries.
- **When the batteries are loaded in the wrong direction. The (+) pole of each battery should face the battery cover when inserted correctly.** Reinsert the batteries.

3. I can't seem to format the SmartMedia. What should I do?

You **MUST** format the SmartMedia in your digital appliance. Follow your digital appliance recommendations for formatting the SmartMedia.

Do not format SmartMedia using any other format utility.

4. Is it necessary to reformat the SmartMedia before reusing it in a device?

No, you can use the "delete" or "erase" function of your digital appliance to remove unwanted files from the SmartMedia. Before erasing, copy any files you do want to save to the computer's hard drive or to a floppy disk.

Safety

For maximum safety, please observe the following precautions:

Definition of Terms

WARNING

Incorrect handling and/or operation could cause serious injury.

CAUTION

Incorrect handling and/or operation could cause damage to equipment or files.

WARNINGS

When handling batteries:

- Do not disassemble or modify the battery.
- Keep the batteries out of the reach of small children. If swallowed, poisoning or asphyxiation can result. Seek a doctor's medical treatment immediately.
- Do not combine old and new batteries.
- Do not disassemble, modify, repair or charge the batteries.
- Do not connect the positive and negative terminals with any metal such as wire.
- Do not transport or store batteries together with metallic objects.
- Do not heat batteries or directly expose them to fire.
- Do not drive nails into, strike with a hammer, or step on the battery.
Failure to observe the above could result in battery leaks, heat emission, ignition, rupturing, skin burns or other injury.
- Observe the positive and negative polarity indications when inserting the batteries. Do not allow dead batteries to remain in the battery compartment.
Failure to observe the above could result in battery leaks, heat emission, rupturing, skin burns or other kind of injury.
- If leaking occurs, do not allow battery fluid to come in contact with the skin. Doing so could result in skin burning. If battery fluid gets on your skin or clothes, wash immediately with water. If battery fluid gets in your eyes, flush with water and seek medical treatment by a physician immediately.
- Use only the recommended type of batteries.
Failure to do so could result in battery leaks, heat emission, rupturing, skin burns or other kind of injury.

CAUTIONS

- Do not use FlashPath near sources of heat or flame. **Doing so could result in smoke or fire.**
- Do not immerse FlashPath in liquids such as water, chemicals or oil. **Doing so could result in short circuiting, electric shock or fire.**
- If bent, dropped or exposed to strong impact, the product should be inspected at the place of purchase or by SmartDisk. **Failure to do so could result in smoke or fire.**
- Do not attempt to repair, modify or disassemble FlashPath. **Doing so could result in fire, electric shock or injury.**
- Do not make direct contact with or touch the pins (connecting surface) of the SmartMedia with metal. **Data could be damaged or erased by static electricity.**
- Do not turn the power off while downloading data from the SmartMedia. **Doing so could damage or erase the internal data.**
- Do not unplug or expose to vibration or impact while uploading data to or downloading data from the SmartMedia. **Doing so could damage or erase the internal data.**
- Be sure to save data to another medium at regular intervals in case the data stored in the SmartMedia is damaged or lost. We are not liable, however, for data saved to any other medium.
- Make sure the SmartMedia contains no essential data or files before formatting. **Failure to do so will result in loss of data.**
- Do not turn off the power or touch the floppy disk drive push button while the floppy disk drive is operating. **Doing so could damage or erase data in the SmartMedia.**
- When the SmartMedia is formatted using your digital appliance format utility, all the data saved in the SmartMedia is erased.
- If a strange odor, sound or smoke is emitted from the FlashPath during use, immediately turn off the power and unplug the PC power cord from the electric outlet. **Failure to do so could result in fire or equipment damage. For repair, contact the place of purchase or SmartDisk.**